

CALENDAR

MARCH 15 – APRIL 16

March

★ **20-22** — The UT System Employee Advisory Council “away” meeting will be hosted by the UT Health Science Center. Various university speakers will give the council members an overview of research and other enterprises at the health science center. The School of Nursing and Student Community Center will be the headquarters for most of the proceedings. Randolph Scott, Ph.D., School of Health Information Sciences, and Billy Hinton, Auxiliary Enterprises University Housing, are health science center representatives to the council. Pamela Lewis, Office of Public Affairs, is the alternate representative.

★ **24** — “Frequency of Oral Care and Positioning of Patients in Critical Care: A Replication Study” by Sandra K. Hanneman, Ph.D., the Jerold B. Katz Distinguished Professor for Nursing Research, associate dean for research, and director of the Center for Nursing Research, **noon**, Friday, School of Nursing and Student Community Center during the School of Nursing Research Seminar Series. Contact: Tammy.Clemmons@uth.tmc.edu, (713) 500-2041.

★ **27** — Basic Disaster Life Support one-day course, **8 a.m.-5 p.m.**, Monday, at the School of Public Health, is targeted to multiple disciplines including: emergency medical service personnel, hazardous materials personnel, public health personnel, and health-care providers to improve the care and coordination of response in weapons of mass destruction disasters and public health emergencies. This course is approved for 7.5 hours of category 1 PRA by the American Medical Association. Free, except for \$15 CE credit fee. Certification in BDLs requires full course completion and a passing score on the competency exam. Register online at <http://www.texasbiosecurity.org>. Contact: David Herrera, M.D., Center for Biosecurity and Public Health Preparedness, (713) 500-9429.

★ **28** — “Hypertension Management: Evidence Based Medicine and Clinical Trials” is the topic of Donald J. DiPette, M.D., the Walter M. Kirkendall, M.D., Endowed Lecture speaker, **noon**, Tuesday, Medical School Building, Room 2.103. DiPette is chairman of the Department of Medicine for The Texas A&M University System Health Science Center College of Medicine and Scott & White Memorial Hospital and Clinic in Temple, and holds the Dr. A. Ford Wolf and Brooksie Nell Boyd Wolf Centennial Chair of Internal Medicine. The Division of General Medicine in the Medical School Department of Internal Medicine hosts the annual lecture in memory of Walter Kirkendall, founding chairman of the department.

★ **28-29** — Advanced Disaster Life Support two-day course, **8 a.m.-5 p.m.**, Tuesday-Wednesday, at the School of Public Health, is open to all health-care providers who have completed the Basic Disaster Life Support course. Day 1 includes lecture and small-group sessions on mass triage, community and hospital disaster planning, media and communication during disasters, and mass fatality

management. Day 2 includes hands-on training. The course is approved for 13 hours of category 1 PRA by the American Medical Association. Free, except for \$15 CE credit fee. Register online at <http://www.texasbiosecurity.org>. Contact: David Herrera, M.D., Center for Biosecurity and Public Health Preparedness, (713) 500-9429.

★ **29** — “Human-Centered Computing in Biomedical Informatics” by Jiajie Zhang, Ph.D., professor and associate dean for research, School of Health Information Sciences. For more information: <http://www.shis.uth.tmc.edu>; contact: Namiko.Burleson@uth.tmc.edu, (713) 500-3938.

April

★ **1** — “Surviving Stroke: The Journey Together,” a day-long conference designed for stroke survivors, their families, and the health-care professionals who work with them, will take place **8:30 a.m.-3:30 p.m.**, the United Way, 50 Waugh Dr. at Feagan; lunch and parking are included. Cost: \$25/individual, \$35/couple, \$75/professionals; CEUs available.

Keynote speaker Judi Johnson, Ph.D., who survived a stroke 14 years ago, will share strategies for accepting changes in oneself and living a full life despite disabilities. The conference also will feature the premiere of a documentary about couples in the Houston area who are adapting to the changes in their lives necessitated by a stroke. Other presentations include: updates on the latest stroke-related research by Lisa Davis, a nurse researcher at the National Institutes of Health; the latest recommendations for early stroke treatment by Nicole Gonzales, M.D., a neurologist on the health science center Stroke Treatment Team; and discussion and demonstrations of new rehabilitation advances by Gerard Francisco, M.D., assistant director of the Brain Injury Program at The Institute for Rehabilitation and Research (TIRR). For information, call (713) 500-9167, or visit <http://son.uth.tmc.edu/coa/>.

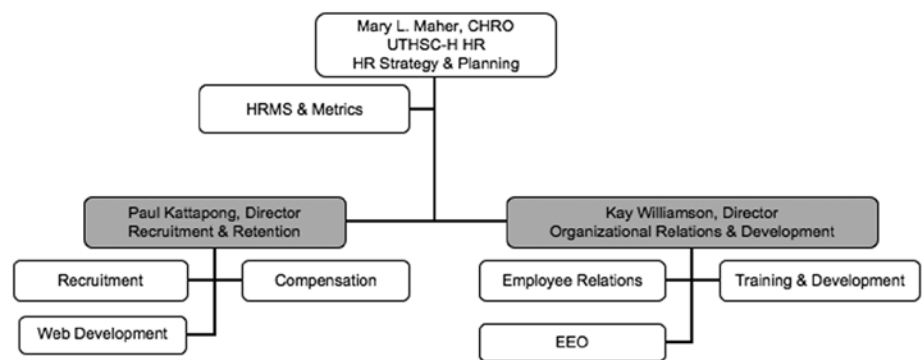
★ **11** — Health Care Team Competition, **5:30-7:30 p.m.**, Tuesday, Medical School Building, Room 3.001, is designed to illustrate an interdisciplinary approach to health care. Each of two interdisciplinary teams, on which the participants have been randomly placed, will interact in solving a case study prepared and judged by health science center and University of Houston faculty. The case involves health sciences, legal and social issues. The teams are made up of students in good academic standing who are in the latter part of their degree program and who indicate an interest in interdisciplinary education. The team members come from the six health science center schools and from the UH Graduate School of Social Work, College of Pharmacy, and Health Law and Policy Institute. The event is videotaped and is sponsored by President James T. Willerson, M.D., and the Student InterCouncil. All team members receive monetary awards and medals for their participation. Members of the winning team receive engraved trophies. The free event is open to the public. Contact: Betty.M.Vaughan@uth.tmc.edu@uth.tmc.edu, (713) 500-3068.

New Directors Named as First Step in Human Resources' Reorganization

continued from page 1

The ultimate goal of employee relations, she said, is to create and sustain a positive work environment despite the sometimes negative actions that must be taken to make this occur. To be most effective, these two functions must work in concert in a proactive manner.

“The more proactive we can be in providing leaders, managers and staff the tools they require to be effective, the less reactive the employee relations component will be,” Williamson said. “Ultimately, with better training, earlier intervention and organizational development, all employees will have greater opportunities to fulfill their career objectives.” ★



Learn Brain Facts from HSC Brainiacs

In celebration of March Madness, you can learn how your brain reacts on the basketball court with the brain scientists of The University of Texas Health Science Center at Houston Neuroscience Research Center on Brain Night at the John P. McGovern Museum of Health and Medical Science, 1515 Hermann Dr., 6-8 p.m., Thursday, March 16. These Brainiacs have special brain science activities, positively brainy crafts, face painting, balloons and prizes to provide you and your family a mind-boggling good time. Also, you can celebrate Women and Health in sports with Houston Comets center Sancho Lyttle, 1-3 p.m., Friday, March 17. For more information about museum activities, visit <http://www.thehealthmuseum.org> or call (713) 521-1515.

In addition, the museum is offering all members of the health science center community the advantage of discounted Museum memberships because the health science center is a member of The Health Museum's Consortium of Health Care Partners. The consortium is a vital resource in the museum's efforts to educate children and families about their health and inspire children's interest in pursuing careers in health care.

Beginning at only \$30 for a Plus One membership (\$5 off) and \$40 for a Family membership (\$10 off), a membership to The Health Museum always includes 12 months of unlimited admission, reciprocal membership privileges at select science center museums nationwide, discounts on birthday parties, a subscription to the museum's *Muse News* and much more.

By joining the museum, you get a great deal for you and your family and your support helps the museum showcase engaging exhibits, continue community programming and inspire a lifelong commitment to health and wellness. Visit <http://216.119.83.242/ExternalAffairs/Membership/tabid/78/Default.aspx> for a complete list of membership levels and benefits. For more information, contact Member Services at (713) 942-7054, ext. 257, or membership@mhms.org.

Admission to the Health Museum is \$6 for adults and \$4 for children and senior adults. Children under four years of age and museum members are admitted free. Hours of operation during March Madness Week: 9 a.m.-5 p.m., Monday-Saturday; noon-5 p.m., Sunday. Visitors can enjoy extended hours and free admission on free Family Thursday, 2-8 p.m., March 16. ★

Bring a Suit to Work!

continued from page 1

- Beautiful, crisp blouses
- Gorgeous blazers and jackets
- Professional shoes
- There is a particular need for larger-size suits.

The Committee on the Status of Women of The University of Texas Health Science Center and the UT School of Nursing Association are sponsors of the annual drive.

Donations will be accepted at various locations throughout the health science center during SOS Week. Look for specific information in upcoming issues of *News on the Go*.

Contact: Charlotte.D.Scott@uth.tmc.edu. Visit <http://www.uth.tmc.edu/csw>.



THE UNIVERSITY of TEXAS
HEALTH SCIENCE CENTER AT HOUSTON

James T. Willerson, M.D.
President

C. Gwin Morris, Ph.D.
Vice President for Public Affairs

Jane Brust
Assistant Vice President for
Public Affairs

Ina Fried
Executive Director of Communications

Pamela Lewis
Editor

Eli Gukich
Designer

Advisory Committee

Mary Maher
Human Resources

Dennie Clemons
University Classified Staff Council

Theresa Le
Administrative & Professional

John McAuliffe
Student InterCouncil

Ted Pate, Ph.D.
Interfaculty Council

Michael Tramonte
Administrative & Professional

DEADLINES

Submit information to be considered for publication in *The Leader* by the 15th of the month one month prior to the desired time of publication. Requests for feature articles require a longer lead time and will receive strategic consideration. Send electronic information in Word format (*no PDFs or posters*) and digital photos as unedited, high-resolution images at 300 dpi or better. E-mail to Pamela.Lewis@uth.tmc.edu. Include a contact name, phone number and e-mail address. Mail hard copy to *The Leader*, c/o Pamela Lewis, Office of Public Affairs, University Center Tower, 1200, or fax to (713) 500-3037. For information regarding *The Leader*, call Pamela Lewis at (713) 500-3040.